

## URBAN COMPOSITION

It is nearly impossible to navigate a city without over-exposure to the incessant flow of visual stimuli we are bombarded with. From architecture follies to commercial signage to traffic information, our field of vision and our sense of personal space are constantly being challenged. Thanks to the digital revolution, that feeling of overload in the environment outside us now expands to an omnipresence that follows us wherever we go. It is difficult to discern what is real, to isolate what is worth seeing, registering, and absorbing fully from what should be immediately "deleted". Are we being fooled or is that element in our peripheral vision something relevant? Is that construction, or deconstruction? A full-bodied street-scape or a virtual mirage merging with the horizon?

Artist Michelle Weinberg takes inspiration from these unstable moments. She creates environments that access the poetic potential of this labyrinthine condition of contemporary life. She parses the images we routinely dismiss from our visual cortex (are they merely temporarily stowed in the trash?) and builds with them. She arranges them in the manner of an architect planning interiors and vistas, selecting materials, surfaces and textures with which to build. Her "architecture" at first glance may seem like a cartoon, a stage set, a faux façade, but it has its own sense of structural integrity and probes a deeper, more fluid sense of space. Repeated patterns push beyond two-dimensionality to achieve a cubist expansion of time and dimension. With its varied and rich spatial configurations, the work also has an undeniable painterly quality. Her mediums may vary, but Weinberg's use of color retains the aura of the artist's studio, of paint on canvas. The strong graphic quality merges with the painter's interest in narrative.

The works in *Pictorial Record* seduce and fascinate, inviting us to discover an exit off the highway, the rear entrance of a warehouse, a mod lounge, or the corner of a forgotten street. Perhaps we have been there and seen that. It's familiar. And then we realize that the familiar has become a place of fantasy and poetry. We are happy to be there. Weinberg might begin squarely in the built environment. She may enlist the verbiage of street signs and advertisements, but she does not use them to sell us anything. Instead she tells us something about ourselves and the way we live.

--Paul Clemence, Brooklyn, NY

Paul Clemence is a visual artist and photographer focusing on architecture and design. He is the author of *Mies Van der Rohe Farnsworth House* and *South Beach Architectural Photographs*. His photos and writing appear regularly in *Metropolismag.com*, *ArchDaily.com* and others.

## SCULPTURE GARDEN (after Michelle Weinberg)

The flower's open mouth,  
the petals looping graffiti.  
The peach I eat tastes like sky. I try  
not to step on the light bulbs  
which are dandelions  
which are eggs  
which are crushed aluminum cans.  
The geometric dove,  
a birdbath, an old tub.  
Outside my window in New York—  
a totem pole  
with a stolen shopping cart  
propped on top.  
The papier-mâché sun,  
a green olive sunk in my martini.  
One solution for Detroit—  
tear everything down  
and commence urban farming.  
The trellis that spells "Tillers,"  
the curlicues in the purple dirt.



*Conversation Pit*, 2008, gouache on paper, 17" x 24". Collection Jamie & Stephania McClennen, New York.

-Denise Duhamel, Hollywood, FL

Denise Duhamel is a poet, winner of an NEA Fellowship, author of numerous books and chapbooks, most recently *Ka-Ching!*. She teaches at Florida International University.



8099 College Parkway, Fort Myers, FL 33919  
239-489-9313 rauschenberggallery.com

## MICHELLE WEINBERG: PICTORIAL RECORD MAY 25 - JUNE 30, 2012

Artist Reception May 25, 6-8pm. Artist talk 7pm.

*Pictorial Record* is an exhibition of recent works by artist Michelle Weinberg. Weinberg is the recipient of awards and fellowships from the State of Florida, the South Florida Cultural Consortium, Fundacion Valparaiso, MacDowell Colony and the Fine Arts Work Center in Provincetown, MA. Recent exhibitions include Dorsch Gallery and Farside in Miami and The Schoolhouse Gallery in Provincetown, MA. She creates rug, tile, mosaic and paint works for architecture, interiors and public places. Weinberg resides in Miami where she teaches at Miami International University of Art & Design. [www.michelleweinberg.com](http://www.michelleweinberg.com)

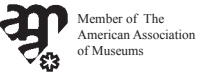
The event is open to the public and there is no charge.

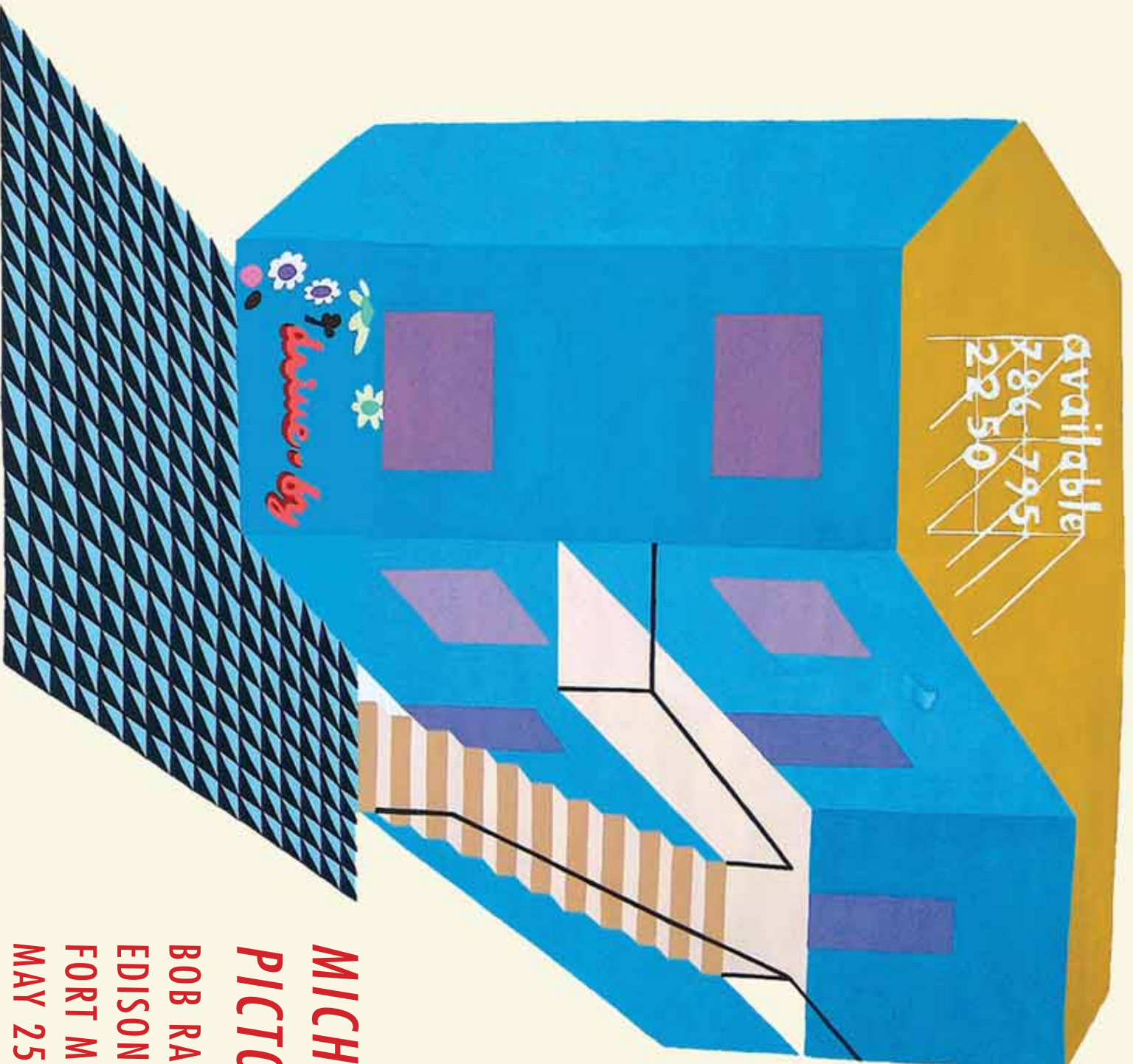
Gallery Hours: Monday - Friday, 10am - 4pm, Saturday 11 am - 3pm. Closed Sundays and holidays.  
Front: *Village Scene*, 2007, gouache on paper, 17" x 24". Collection Arturo & Liza Mosquera, Miami.  
Reverse: *PreFab 1*, 2008, gouache on paper, 60" x 36". Collection Dimitry Chamy, Miami.

Bob Rauschenberg Gallery  
Edison State College  
8099 College Parkway  
Fort Myers, Florida 33919

Non-Profit  
Organization  
U.S. Postage Paid  
Ft. Myers, FL  
Permit No. 271

Gallery exhibitions are sponsored in part  
by the National Endowment for the Arts,  
The State of Florida, Department of Cultural  
Affairs and the Florida Arts Council.





**MICHELLE WEINBERG:  
PICTORIAL RECORD**

**BOB RAUSCHENBERG GALLERY  
EDISON STATE COLLEGE  
FORT MYERS, FLORIDA  
MAY 25 - JUNE 30, 2012**

